

## CASE STUDY

Ambercor Shipping Inc.

PEOPLE | PARTNERSHIP | PERFORMANCE



# Ambercor Shipping Inc.

## Moves large 'hot isostatic pressing' machine from Washington to Oregon

A world leader in high pressure technology with manufacturing in Europe.

Customer needed to move two (2) large frames, one (1) heavy cylinder and several accessories with a total weight of 1,204.980 cubic meters from Europe to Oregon.

As this is very sensitive cargo, it was mandatory to monitor the discharge and transloading process in the port of arrival, the road transportation and offloading at site.

Since all cargo arrived at port Tacoma at the same time, a coordination of the over-the-road equipment and its availability was key. Especially for the three (3) large units since 2x cranes were needed in order to discharge from the incoming Mafi trailers onto 3x dual-lane trailers. Furthermore, our customer requested to deliver the frames, cylinder & accessories in a specific pre-determined delivery sequence for the on-site rigging team to install.

Travel restrictions due to weight made it impossible to move the heavy haul during the daytime. DOT (Department of transportation) issued the permits for travelling in the nighttime which gave us a very small-time frame.

Ambercor Shipping was able organize 2x heavy mobile cranes for the discharge at the port of Tacoma, WA. and organized a marine survey for the discharge and the truck loading.

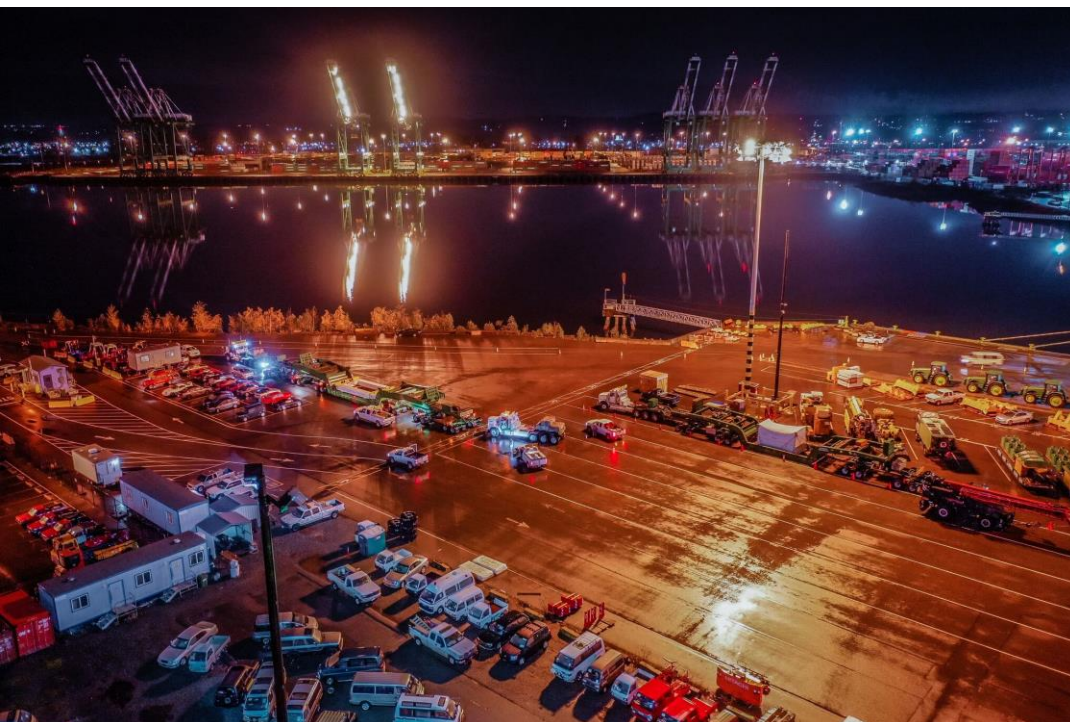
Ambercor designed a securing / lashing plan per trailer as well as a loadout and delivery plan for the frames, cylinder and the accessories which being a total of twenty-four (24) truck loads, which consisted of units from legal loads up to slightly oversize and overweight configurations.

Ambercor developed a traffic management plan (before project was awarded) to avoid uncertainty and to eliminate any unknown factors.

Ambercor provided daily status reports to the customer outlining the transparent overview of the ongoing process.

### Achieved Benefits

- Arrived safely and securely
- On time and on budget
- Met customer, receiver and shipment requirements



Client Profile

Situation

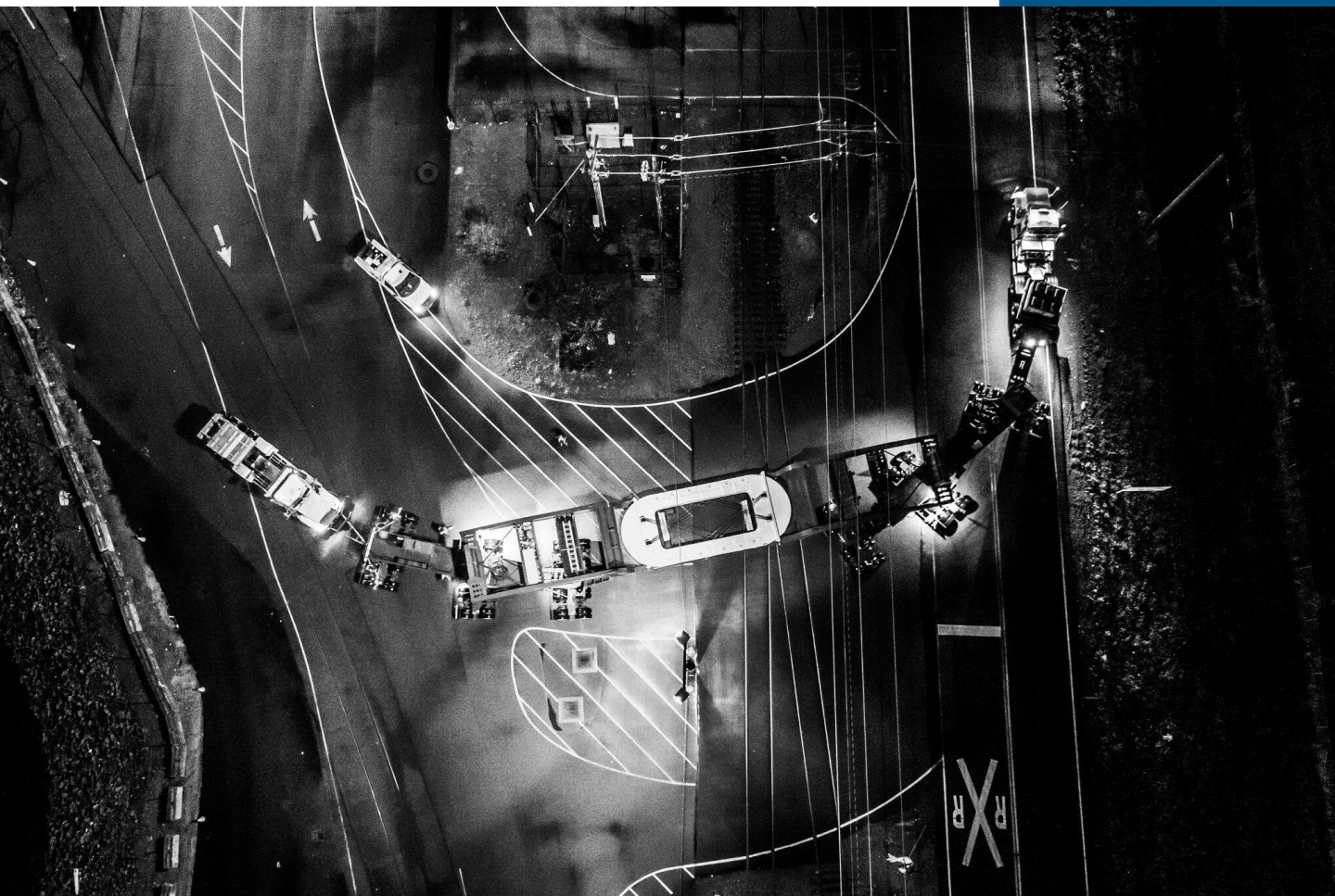
Our Solution

# Our Project picture log

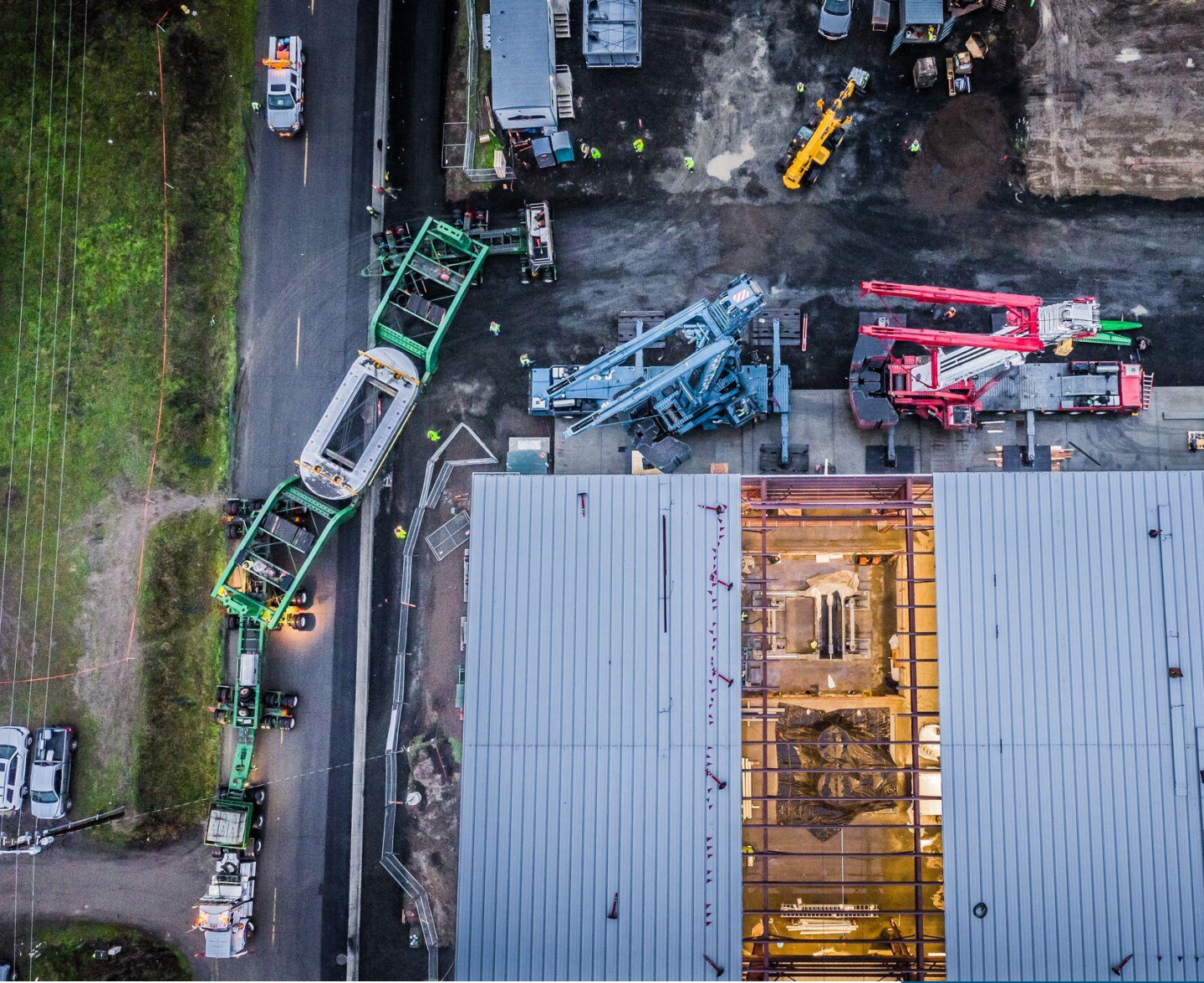
---



# Our Project picture log



# Our Project picture log



# Our Project picture log



Global Head Office

Calgary Office

New York Office

Main Phone: +1 (416) 841-7000  
701 Evans Avenue, Suite 301  
**Toronto, ON-M9C 1A3**  
Canada

Phone: +1 (403) 519-2455  
270 Mountainview Dr.  
**Okotoks, AB-T1S 0N1**  
Canada

Phone: +1 (212) 500-5929  
17 Battery Place, Suite 1307  
**New York, NY-10004**  
USA

projects@ambercor.com  
Find out more at [www.ambercor.com](http://www.ambercor.com)

